

Shine-n-Go Times

January/February 2008

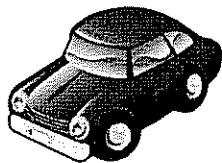
Insight from Toby.

Here it is, February and winter is on the down hill slide. Time sure does fly by. 2007 was a record year for Shine Bros. Corp., and I want to thank all of you for your contribution to our success. This year is starting out strong, but with all the negative news we are hearing, it makes me wonder what the year will really be like. Nonetheless, I am confident that the great group of employees here can keep us moving in the right direction.

We have been very much in the safety mode for some time, and it is paying off. Above all else, we want you to work safely and return home each day. We have been doing a great job with safety - keep up the good work!!

2008 will bring more challenges and opportunities for all of us but I know that you will be up to the task. We spend many dollars on buildings and equipment each year, but our greatest asset is our teammates, and when all is said and done, that's what counts. May 2008 bring you all great happiness and pleasure.

Did you know....



Auto recycling accounts for over one-third of all ferrous scrap in America's scrap recycling industry, according to Ford Motor Co., who claimed that about 85 percent of a Ford vehicle is recyclable.

Detroit Free Press 12/25/07

Scrap is the second-largest category of U.S. exports to China (after aerospace products), totaling 6.7 billion in 2006.

Scrap January/February '08

Recycling one ton of steel conserves 2500 lbs. of iron ore, 1400 lbs. of coal and 120 lbs. of limestone. Recycling one ton of aluminum conserves up to 8 tons bauxite ore and 14 megawatt hours of electricity.

www.isri.com

Words from Dan.

A few weeks ago, we were speaking to a scrap supplier about a load of metals. They had some copper, brass, aluminum and stainless steel to sell. We made the best price quote we could and managed to buy the load.

We were later informed by the customer that when his driver delivered his loads to us, the employees at Shine Bros. Corp. were very polite and helpful. This was important to the customer.

He emphasized that along with being courteous, we were also helpful when we unloaded. If a certain grade was not quite correct, quality wise, we informed his driver what they could do make it better. We did not harshly criticize them. Again, this was very important to the customer.

This pro-active attitude by our unloading personnel is a very important part of our success with this customer and all of our customers.

Let all of us at Shine Bros. Corp. do our best to put forth this same attitude. It will contribute to our continued success.

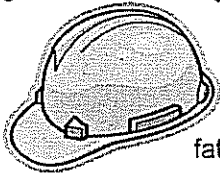
Grab & Go Auto Salvage, LLC

Need a winter coat or coverall? Grab & Go has an abundant supply of warm outerwear for sale from A&M Laundry. This used clothing is offered at a relatively low cost so check it out. While you are there, also check out the large rugs that would work great in your garage or shop.

Used anti-freeze is available by the gallon jug or the 55-gallon drum, whichever works best for you. The friendly and helpful staff at Grab & Go is always there to answer your questions, so pay them a visit!



- Randy, Manager



Electrical hazards, while a fraction of total workplace injuries, are more likely to result in death than injuries from other causes.

- Electrical accidents on the job cause an average of 13 days away from work and nearly one fatality every day.

- Nonfatal electrical injury occurs most often to those who work with machines or tools and around electrical wiring other than power lines.

Electrical hazards on the job can be avoided by following approved guidelines. Skilled employees trained in electrical safety procedures should make sure they understand and follow safety precautions. Those not trained to recognize and avoid electrical hazards should avoid contact with electrical equipment and systems

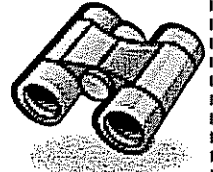
You should:

- Understand the construction and operation of the electrical equipment and the hazards involved.
- Identify all possible energy sources that could pose on-the-job hazards.
- Know safety requirements and follow them.
- Select the appropriate personal protective equipment (PPE).
- Before working on or around electrical systems or equipment, identify the load circuits and disconnect. Remember, in some cases, turning power off may cause other hazards.
- Use lock-out/tag-out procedures
- Verify that the equipment or system has been de-energized by testing.
- Above all, never assume that the equipment or system is de-energized

Remember to always **TEST BEFORE YOU TOUCH**

- Mark, Safety Manager

Department Focus: East Chop - Steve, Manager

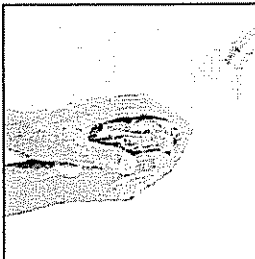


East Chop employees take insulated copper wire and make it into sellable grades of copper—either grade #1 or grade #2. The inside employees keep the machines full of material and keep an eye on the quality of the product as well as maintain equipment. The MTB employees working outside sort material that would either lower the quality of the product or damage the machine. Lead, tin-plated wire and/or brass are examples of items that would lower the quality of copper. Damage to the machine could be the result of a rock, concrete or heavy pieces of iron not being sorted out before it's fed into the machine. Diligence pays off!

Some of the uses for the sold copper are as an additive in different chemicals, an iron foundry, sheet copper, or other various copper and brass products.

Did you know that the East MTB was the first MTB in North America when it arrived at Shine Bros. Corp. in mid-1990? Do you know what MTB stands for? MTB = machines de Triages et de Broyages, manufactured in France. Now you know why we call it "MTB". The gravity separators and vibrating screens in the machine enable the separation of materials after granulation. The separation occurs by virtue of the combination of a fluidized bed and an inclined vibrating table. There are 500+ machines throughout the world and they weigh anywhere between 3 and 33 tons.

On the company website—www.mtb-recycling.fr, the following can be found, *Toby Shine, president of Shine Bros. Corp. (Spencer, Iowa), says MTB has "revolutionized" the wire-chopping industry with the extremely small pieces that its shredders can produce. As MTB's first U.S. customer (for shredders and, more recently, a granulator), Shine speaks from experience when he uses the "neatest-thing-since-sliced-bread" analogy to describe the two BDR 2400 units he operates.*



It's that time of year when colds and flu get the best of us, but there is a way to fight back. Prevent the spread of germs. In the scrap industry it is important to wash your hands prior to eating, smoking, etc. Hand washing can also prevent the transmission of germs. The Center for Disease Control recommends vigorous scrubbing with warm, soapy water for at least 15 seconds.

www.isri.org

Employee Anniversaries *



January

Name	Dept.	Years
Toby Shine	President	50
Danny Umbrell	Warehouse	34
David Yungbluth	Truck Driver	12
Kim Tomlinson	Office	8
Lyle Grubb	Metals	5
Brian Holm	Iron Yard	4
Dennis Schrum	Iron Yard	4
Travis Fitzgerald	Iron Yard	3
Misael Jiron	Iron Yard	3
Richard Johnson	East Chop	3
Juan Morales	East Chop	3
Ramon Rodriguez	West Chop	3
Chris Wunder	Iron Yard	3
Travis Briggs	East Chop	1

February

Name	Dept.	Years
Kris Davis	Metals	1
Gary Merrill	Metals	1

March

Name	Dept.	Years
Ericka Fritz	Office	1
Levi Gloyd	Maintenance	20
Bill Hagen	Maintenance	3
Brian Parks	Truck Driver	1
Randy Pauley	West Chop	1
David Wekony	Metals	12

* For ease of calculation and reporting, the anniversary dates and years are according to most recent hire date.



Do you want to order uniforms or change your order?

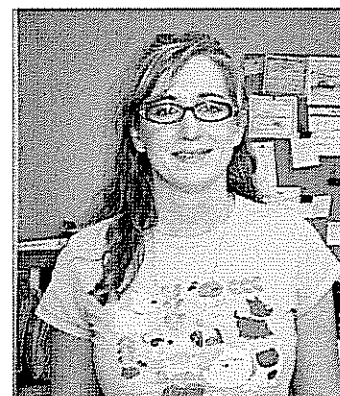
Contact Michael Loetz in the office.

And the winners are....

The Name the Newsletter contest began in November with an entry deadline of December 1, 2007. The choice was difficult but in the end, we combined two entries for the winning selection, "Shine-n-Go Times". The winning entries were submitted by Ericka Fritz and Chris Hart. They will each receive a \$50 Hy-Vee gift card. Thanks to all who participated!



Chris Hart



Ericka Fritz

A time for change.....

- ♦ Annual open enrollment for health insurance will be held in February for a March 1, 2008 effective date. Eligible employees that have previously waived coverage may elect to participate in the Plan at this time. This includes a reduction in coverage from Family to Single or, from either Family or Single to no coverage. **This means you cannot drop insurance coverage during the year (without a qualifying event) until March 1, 2009.** Employees must complete an enrollment form/change form (available in the office) and submit it to Karen in Human Resources preferably by February 26, 2008 **but no later than February 29, 2008.**
- ♦ If you are currently enrolled in the health insurance plan, do you need to update your beneficiary information for your life insurance?
- ♦ Is it time to change the beneficiary for your 401K?
- ♦ Did you recently move and forget to inform the Company and the health insurance carrier?
- ♦ Do you have a new telephone number?

See Karen, Human Resources, for more details.